



## Woodbine Cottage Riber Road

Starkholmes, Matlock, DE4 5JB

£539,000





## Woodbine Cottage Ribber

Starkholmes, Matlock, DE4 5JB

£550,000 (Asking price) Situated in the highly desirable and picturesque village of Starkholmes, close to local village amenities is this charming and exceptionally pretty, 3 bedroom detached cottage. Enjoying stunning scenic views and boasting a wealth of period features throughout its 1275 sqft of living accommodation whilst benefitting from two reception rooms, a generous garden with decking and off road parking.

The ground floor comprises; a well proportioned living room with log burning stove, dual aspect dining room showcasing the beautiful views, and modern galley kitchen with Belfast sink, integrated appliances and access onto the rear.

The first floor comprises; master bedroom with store room and views of the countryside, 2 further generous bedrooms and family bathroom, with free standing bath and separate shower.

We would advise that you conduct a drive by to ensure you're satisfied with the position of the property, as there is a steep access.

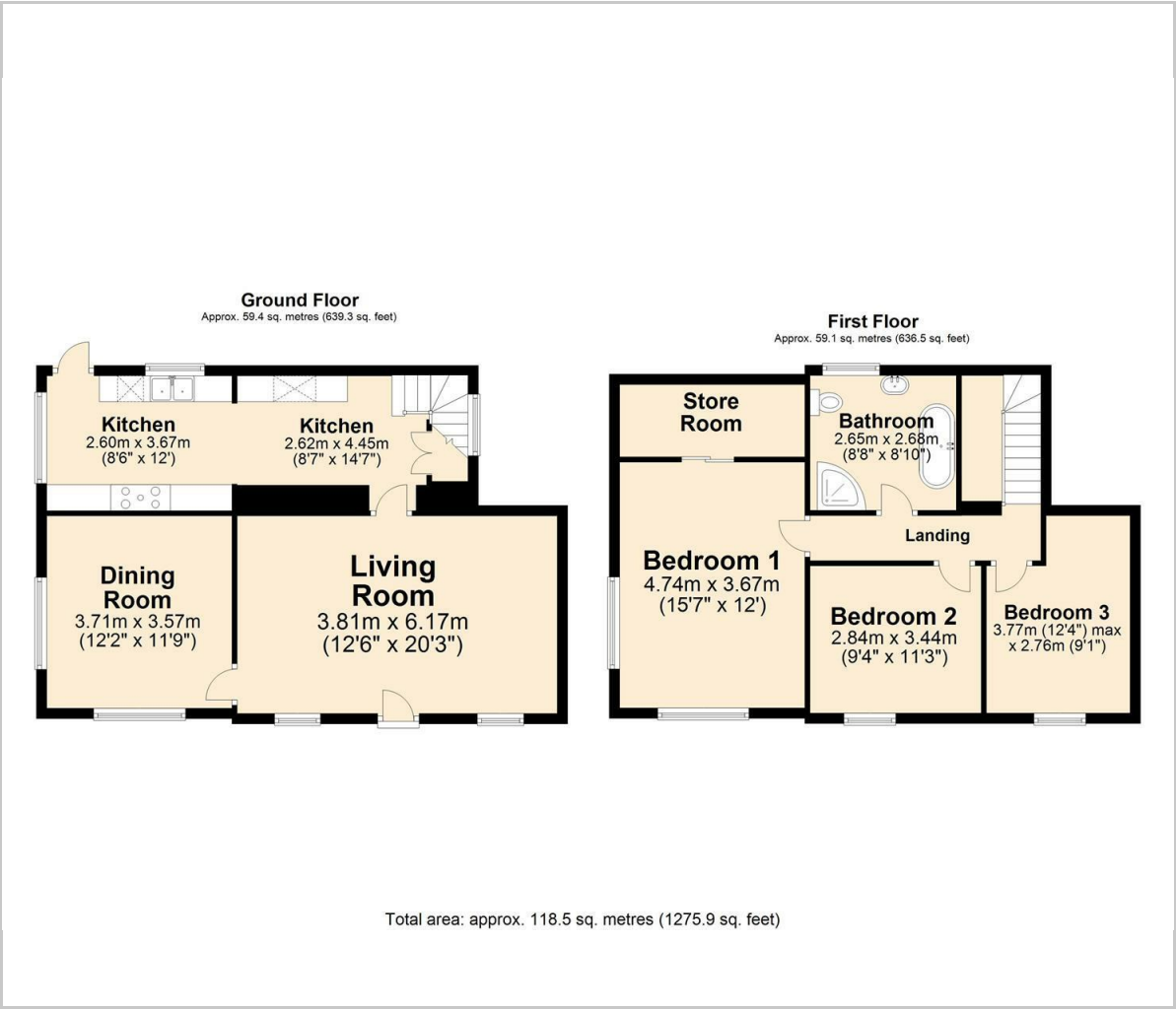
**Dales and Peaks ForwardMove**  
- Please read







Floor Plan



Viewing

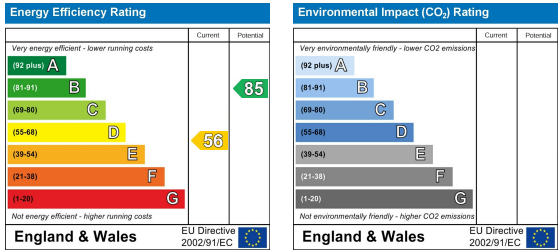
Please contact our Chesterfield Office on 01246 567540 if you wish to arrange a viewing appointment for this property or require further information.

These particulars, whilst believed to be accurate are set out as a general outline only for guidance and do not constitute any part of an offer or contract. Intending purchasers should not rely on them as statements of representation of fact, but must satisfy themselves by inspection or otherwise as to their accuracy. No person in this firms employment has the authority to make or give any representation or warranty in respect of the property.

Area Map



Energy Efficiency Graph



131 Chatsworth Road, Chesterfield, Derbyshire, S40 2AP  
T: 01246 567540



E: info@dalesandpeaks.co.uk  
www.dalesandpeaks.co.uk